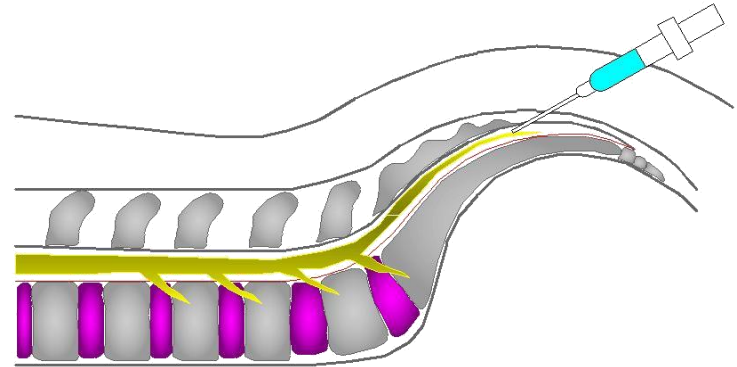
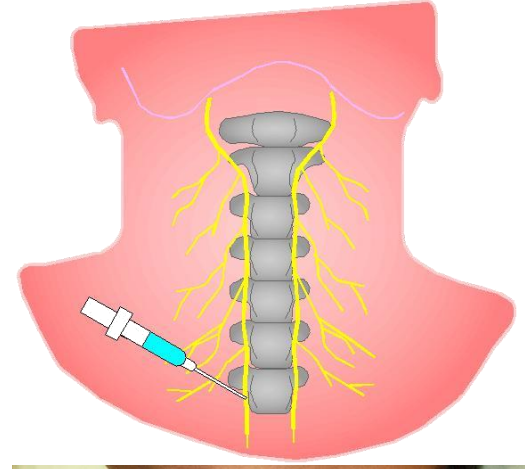


HONDA destekli sistem ile Biyopsi işlemi

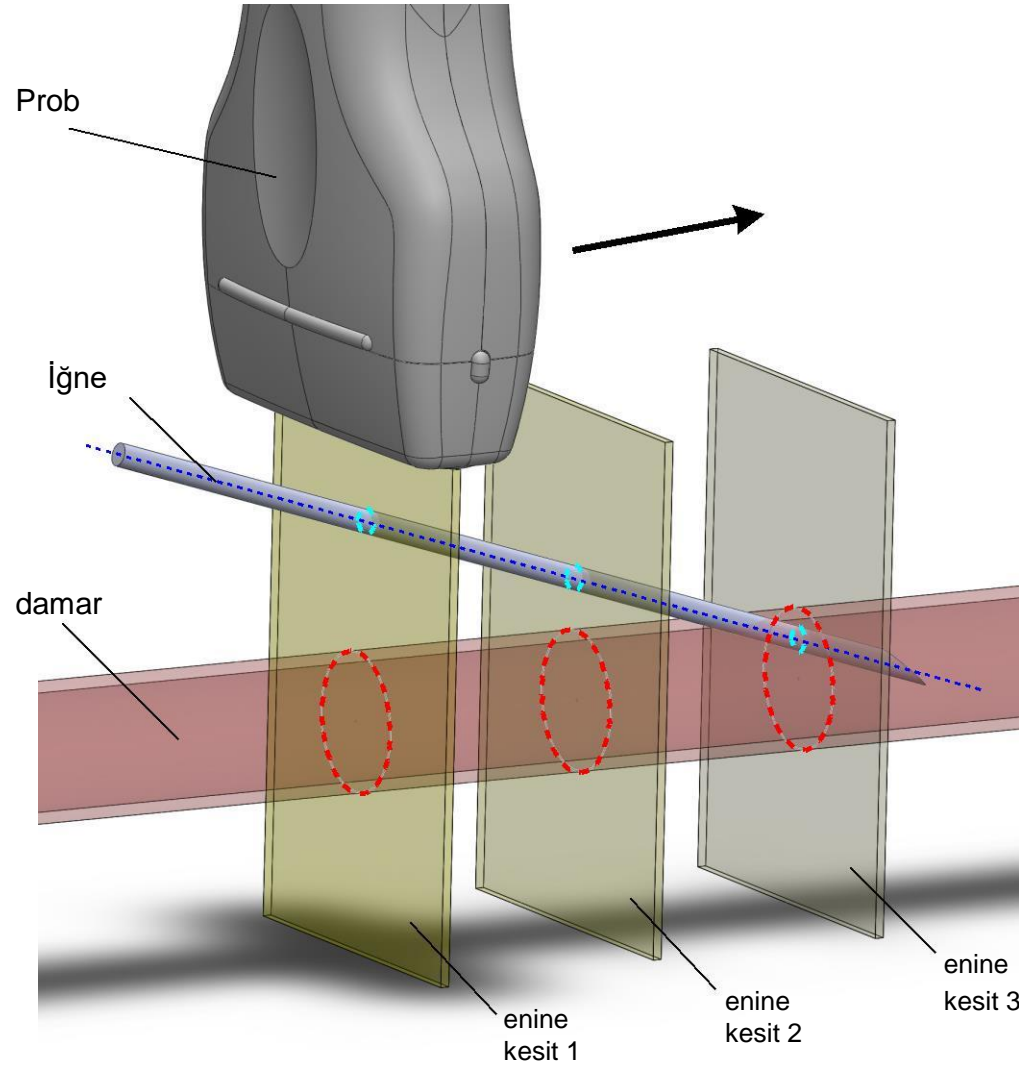
İğne ile sinir bloğu delme uygulaması ve kateter yerleştirmenin güvenli olması için ultrason rehberliğinde işlem önerilmektedir.



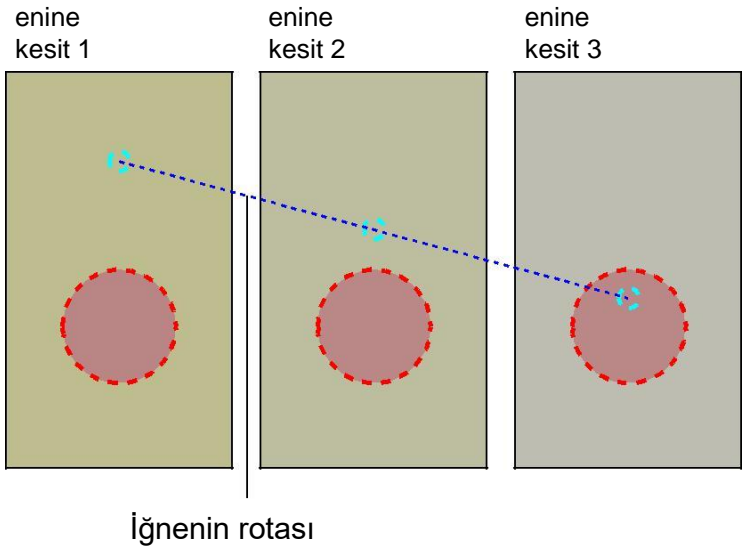
Kolay ve doğru delme işlemi için ultrason kullanımı gereklidir.



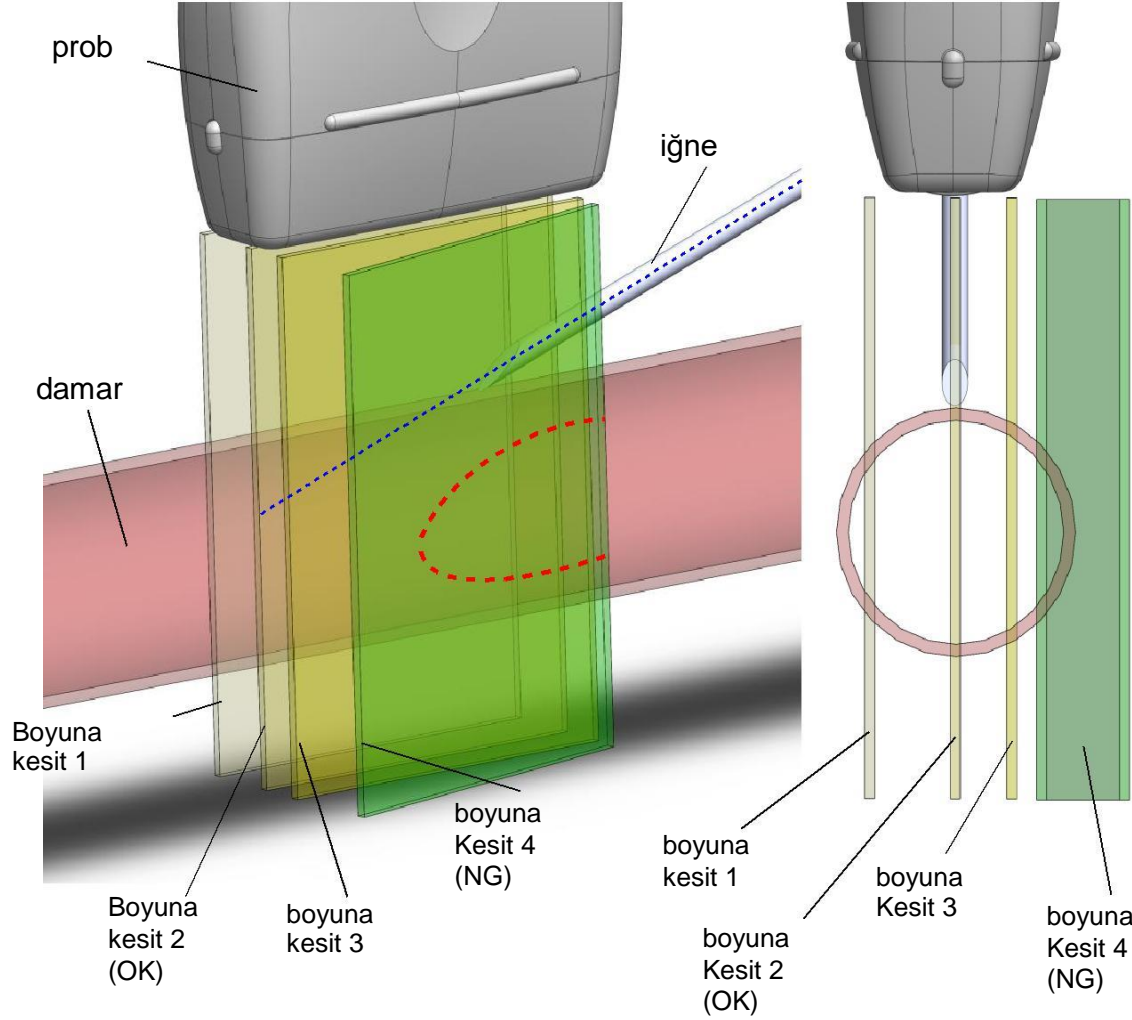
Out-Plane Metodu



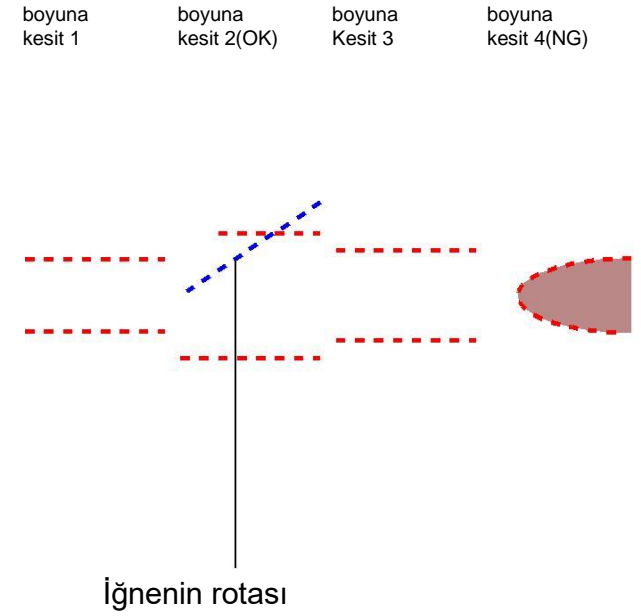
Ultrasound kesit görüntüsü



In-Plane Metodu



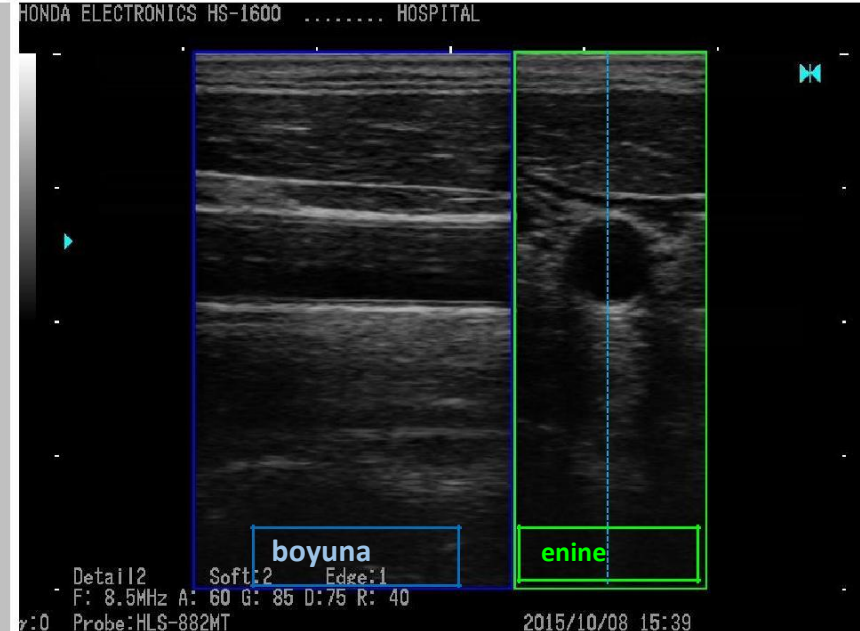
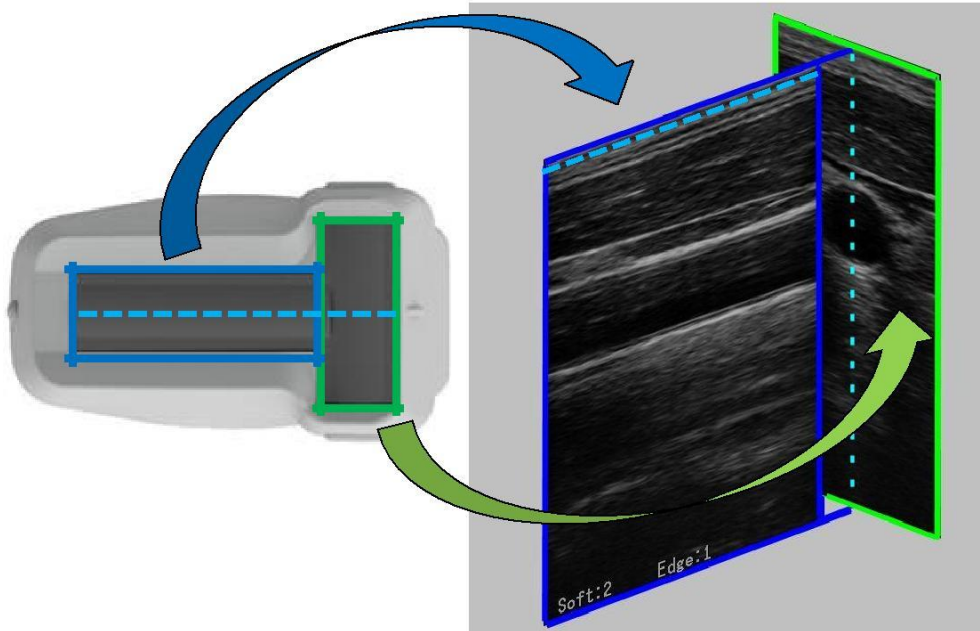
Ultrason kesit görüntüsü



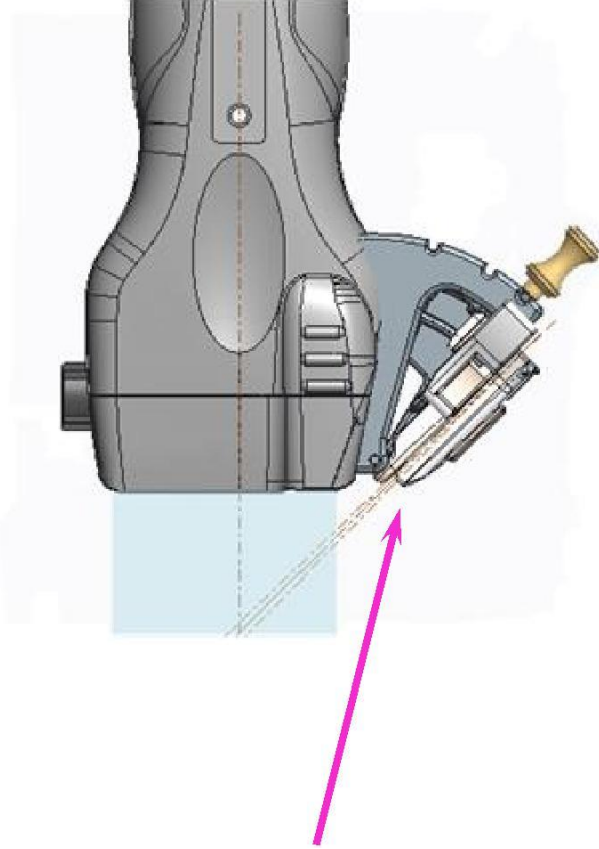
T-şekilli prob(HLS-882MT)



1. Probe yerleştirme enine ve boyuna olmak üzere iki kesitli olarak aynı anda elde edilebilmektedir.

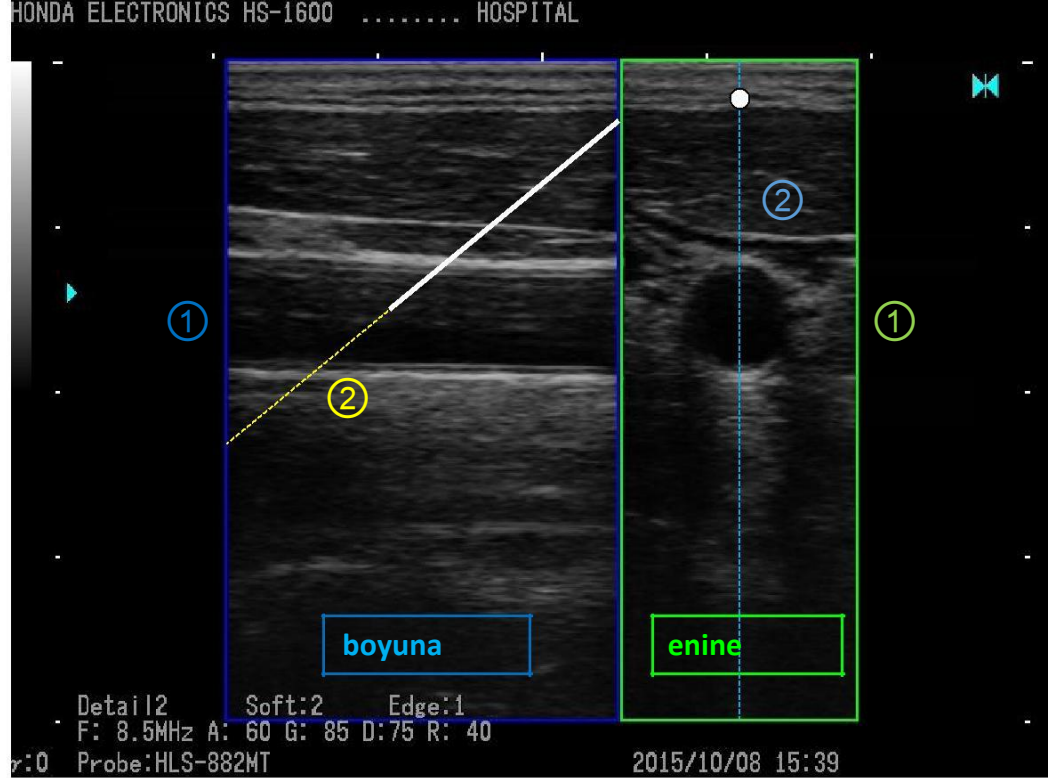


2. İğne kılavuzuyla delme işlemi



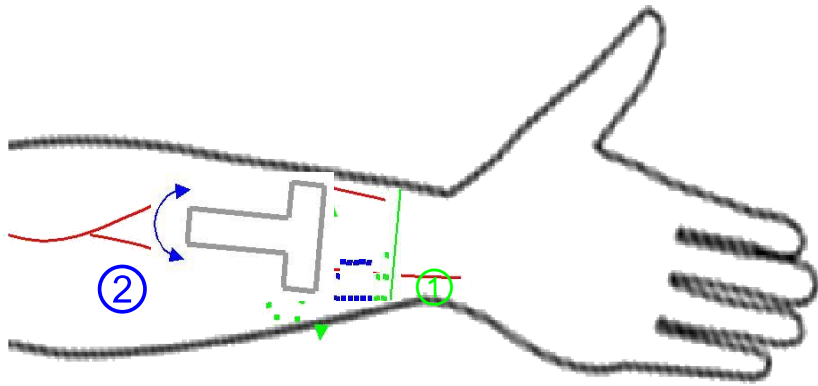
Biyopsi
iğnesi

3. Ekrandaki görüntüye bakarak hedeflenen bölgeye ulaşabilirsiniz.

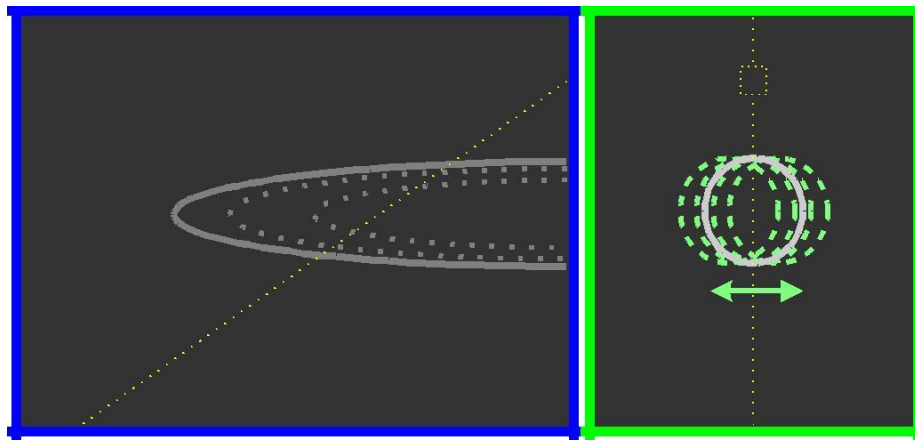


- ① İki kesit görüntüleme
(uzun ve kısa eksen) aynı anda yanyana
- ② Biyopsi iğne rehberi iki eksen de görülür

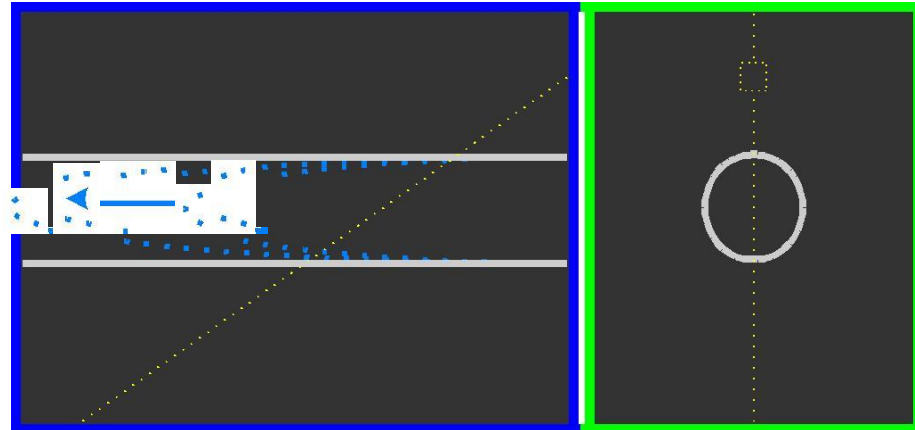
~ Delme Prosedürü ~



1



2



3

