

# KMC 650

## *Economic Solution*

KMC-650 is a compact and economic C-arm system for applications in neuro-surgery, pain management, emergency room and orthopedics.



Surgical C-arm  
**KMC** series

**Gücü ve Performansı Araştırın, Tasarruf Edin!**

**Sınıfındaki Kusursuz Güçteki 3kW'lık Jeneratör**

**Normal Floreskopide 20mA güç ile Kalın (Obez) Hastalarda dahi Mükemmel Görüntü Kalitesi!**



## Specifications



3.0kW, High Frequency Generator



135° Wide Orbital Rotation with large SID distance



Easy Archiving and Documentation  
- DICOM 3.0  
- CD/DVD Burner  
- DICOM Paper Print Support  
- USB Port



1Kx1k High Resolution CCD Camera



High Resolution B/W 19" LCD Medical Grade Monitors



Monotank Type Tube

## Smart CX-View



**Database Management**  
- More convenient "search&save" capabilities  
- Manage patient information  
- Before & after surgery comparison



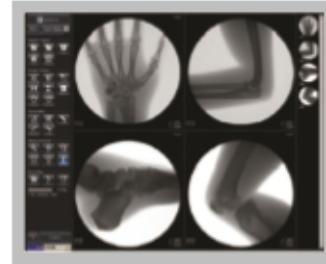
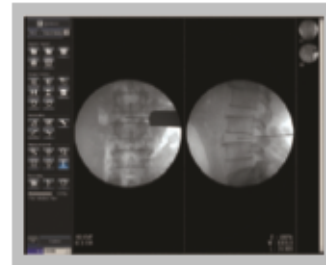
**Unlimited Image Memory**  
- Unlimited patient capacity  
- Unlimited study images



**Versatile Diagnostic Tools**  
- Zoom, Contrast, Reverse, Invert  
- Filtering, Edge Enhancement  
- Annotation

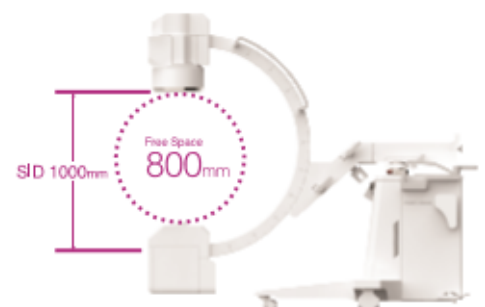


**PACS connectivity with DICOM 3.0**  
- Store and Print, Modality Worklist Management  
- MPPS, Storage Commitment, and Import & Export



## Option

- Laser Marker
- DAP (Dose Area Product)
- Virtual colimator
- Thermal printer



The Power of Passion

## GEMSS

GEMSS MEDICAL SYSTEMS CO., LTD.

61, Dunchon-daero 541 beon-gil, Jungwon-gu,  
Seongnam-si, Gyeonggi-do, Korea  
Phone: +82-31-764-7321  
Fax: +82-31-764-7324  
www.gemss-medical.com



## VEGA Group

(+90 216) 444 8342 (+90) 212 310 69 36

