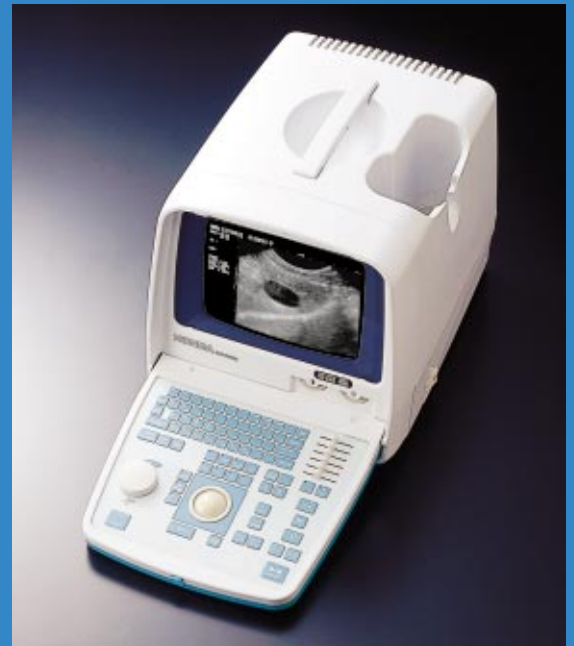


# HS-2000 for the Small-, Large- and Mixed animal practice

- advanced technology and excellent image quality embodied in a stylish unit-

The HS-2000 is a compact yet attractive unit featuring high-resolution Black & White ultrasound imaging with outstanding technology. The Scanned Ultrasound Images can be stored in the flash memory. The portability and image storage function enable to scan anywhere: In the clinic or on the farm / stud. The triple frequency veterinary rectal probe provides excellent images for reproduction and tendon study of large animals. The triple frequency micro-convex probe is excellent for reproduction, cardiac and abdominal examinations in small animals. The HS-2000, the new standard in Convex/Linear portable scanners for the veterinary practice. Satisfying the needs of 21st century.



A Special Compact Unit In Its Own Right

## Mixed Practice

### Small animals

#### Dog

Gestational Sac Diameter  
Crown Rump Length  
(less than 40 days)

Head Diameter  
Body Diameter  
(more than 40 days)

#### Cat

Head Diameter  
Body Diameter  
(more than 40 days)



### Large animals

#### Equine

Sac Diameter  
Conceptus Diameter

#### Sheep

Trunk Diameter  
Head Diameter

#### Cattle

Trunk Diameter  
Head Length  
Head Diameter  
Crown Rump Length



**HCS-452M :**  
**Multi Frequency Microconvex Probe 3.5 - 5.0 - 7.0 MHz**

Due to its wide frequency range, it's the ideal probe for small animal examination from large dogs (3.5 MHz) to small cats (7.0 MHz). The small footprint provides easy contact for reproductive- abdominal- and cardiac examinations.



**HLS-475VWF :**  
**Multi Frequency Rectal Probe 5.0-7.5-9.0 MHz**

Because of its wide frequency range and image width the probe not only gives an excellent image quality when used rectally in large animals, but can also be used for tendon examinations. This allows the veterinarian to start with only one probe for both types of examination.



**HLS-475M :**  
**Multi Frequency Linear Probe 5.0-7.5-10.0 MHz. 50mm**

Because of its wide frequency range and in case the equine practitioner also has larger horses, where some more penetration is required, this is the ideal probe for tendon examinations. The probe has a T-shape and is therefore easy to handle.



**HLS-413 :**  
**High Frequency Linear Probe 10.0 MHz, 30mm**

The high frequency of this easy to handle T-shaped 10.0 MHz linear probe makes it easy for the equine practitioner to obtain the best possible images of horse tendons.